

PRELIMINARY ISSUE
THIS PLAN ISSUED FOR
ADVANCE INFORMATION ONLY

NAD 83
CENTERLINE ANGLE POINTS
HUMBOLDT BAY
(BAR & ENTRANCE)

PT	X	Y
C-1	5936273.49	2172157.43
C-2	5938147.59	2171508.43
C-3	5940265.09	2170773.43
C-4	5943553.39	2166602.43
C-5	5944545.29	2166122.43
C-6	5945376.39	2165957.23
C-7	5946085.69	2166728.23
C-8	5946886.39	2167508.33
C-9	5947166.09	2168359.43
C-10	5948049.39	2169917.43
C-11	5948433.89	2170455.43
C-12	5949233.79	2171119.43
C-13	5950417.39	2171891.43
C-14	5951329.29	2172556.43
C-15	5952138.39	2173530.43
C-16	5952999.89	2174705.43
C-17	5953711.89	2180451.43
C-18	5956236.79	2183159.43
C-19	5957823.09	2186979.43
C-20	5958152.59	2187513.43
C-21	5958681.79	2187878.43
C-22	5959281.79	2188078.43
C-23	5959581.79	2189078.43

NAD 83
CHANNEL ANGLE POINTS
HUMBOLDT BAY (BAR & ENTRANCE)

PT	X	Y	PT	X	Y
1	5936596.69	2173163.63	24	5959081.79	2187578.43
2	5938385.39	2172268.83	25	5958421.69	2187381.23
3	5940404.09	2171258.93	26	5958007.99	2186903.83
4	5943666.09	2169944.43	27	5958425.99	2183933.63
5	5944727.49	2166468.93	28	5958165.59	2181942.63
6	5945239.99	2166690.33	29	5956348.69	2181424.83
7	5945752.59	2166911.73	30	5955956.89	2180353.43
8	5946454.09	2167331.33	31	5955163.09	2174904.63
9	5946953.59	2168479.53	32	5952300.39	2173413.53
10	5947931.59	2170042.13	33	5951516.79	2172459.53
11	5949193.09	2170679.33	34	5950526.69	2171724.13
12	5949124.59	2171287.03	35	5949343.09	2170952.03
13	5950308.09	2172059.13	36	5948674.79	2170232.13
14	5951141.79	2172853.23	37	5948301.49	2169794.33
15	5951976.39	2173548.23	38	5947989.59	2169242.23
16	5952816.79	2174808.43	39	5948007.49	2167381.23
17	5955484.79	2180520.43	40	5946431.39	2166537.23
18	5956047.79	2183225.33	41	5945672.89	2165192.43
19	5957638.19	2187055.43	42	5945354.09	2162524.63
20	5957883.59	2187647.53	43	5944363.09	2165776.33
21	5958881.79	2188978.43	44	5943441.39	2162611.63
22	5959581.79	2189078.43	45	5943125.19	2172287.83
23	5959681.79	2188378.43	46	5937908.79	2170746.43
			47	5936950.29	2171151.43

US Army Corps of Engineers
San Francisco District
450 Golden Gate Ave
San Francisco, CA 94102

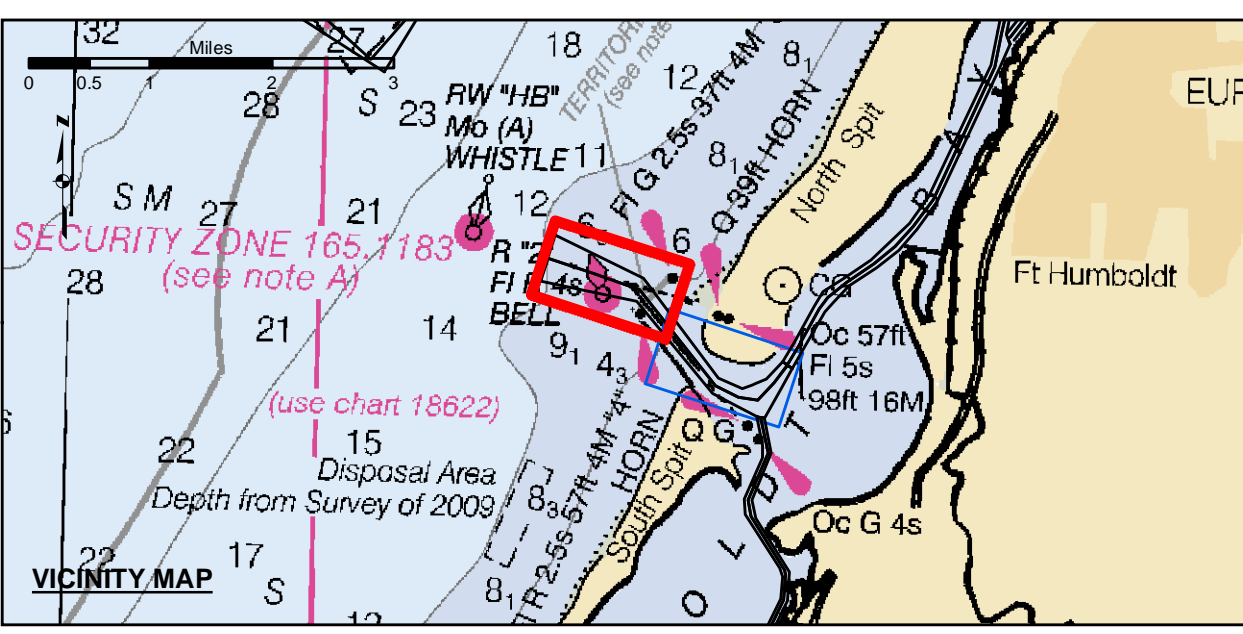
DISCLAIMER
The United States Government furnishes this information as a public service. It is not intended to be used for any purpose other than that for which it was prepared. The United States Government makes no warranty, expressed or implied, concerning the accuracy, completeness, or reliability of the information. The user is responsible for the results of any use of the information. The user shall indemnify and hold the United States Government harmless from any and all claims, damages, and expenses, including reasonable attorneys' fees, that may be incurred by the United States Government as a result of the use of the information. These data belong to the Government. Therefore the user shall not disseminate these data to others without also transferring this disclaimer.

PREPARED UNDER THE DIRECTION OF
KEVIN P. ARNETT
LT COLONEL, C.E. DISTRICT ENGINEER

Activity	Date
Chart Date	Mar 29, 2022
Designed by	PDT
Plotted by	PDT
Checked by	PDT
Drawn by	PDT

CALIFORNIA
**HUMBOLDT BAY
BAR & ENTRANCE CHANNEL
CONDITION SURVEY**
23 MARCH 2022

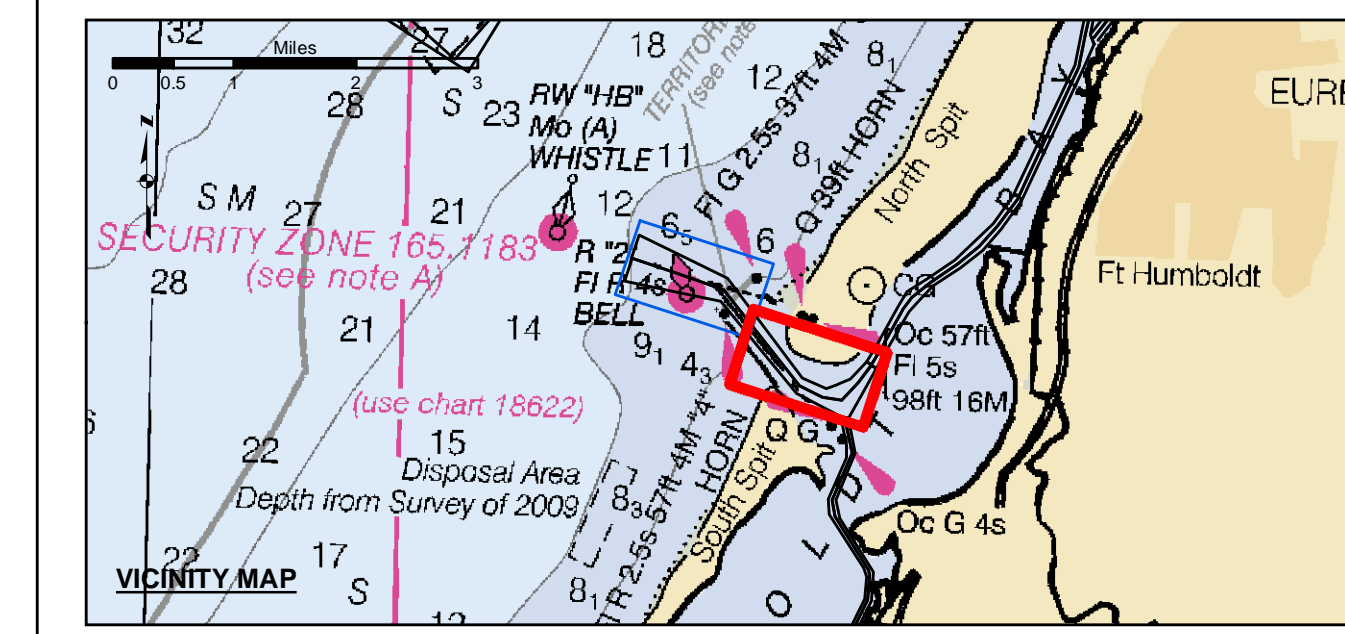
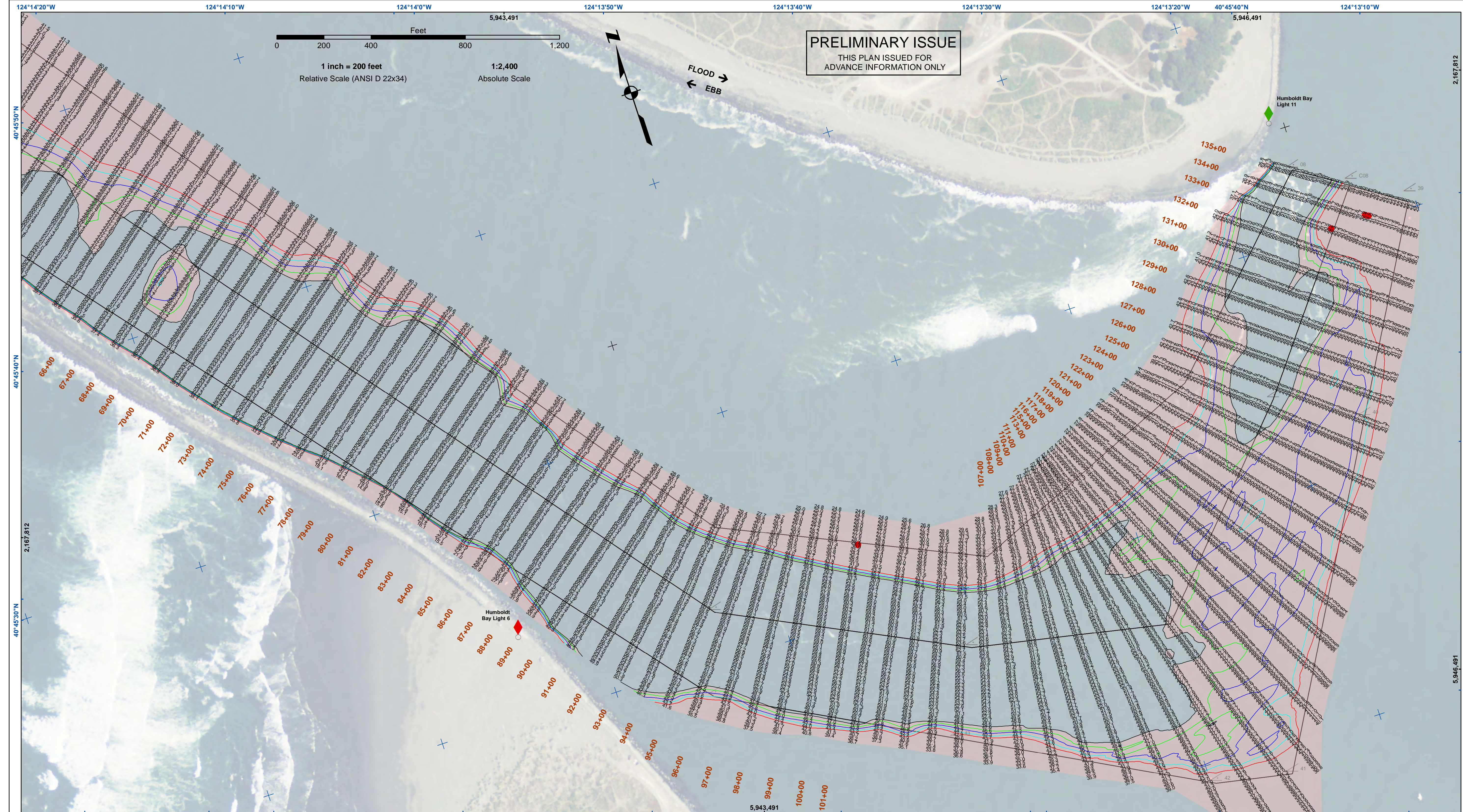
**Sheet
Number
1 of 2**



- Federal Navigation Channel
- Shoaling Area
- Placement Area
- Anchorage Area
- Wreck Area
- Submerged Wreck
- Zone_I_Angle_Points
- Beacon, General
- Obstruction Point
- Navigation Buoy
- Navigation Buoy
- Shoalest Sounding*
- Contours
- 48
- 47
- 46
- 45
- 44

NOTES:
DRAWINGS NOT TO BE USED AS NAVIGATION. ONLY CHANNEL CONDITION AT DATE OF SURVEY. THE LOCATION OF ALL NAVIGATION AIDS ARE BASED ON INFORMATION PROVIDED BY THE U.S. COAST GUARD. BUOY LOCATION REPRESENT THE POSITION OF THE SINKER ONLY.
SURVEYED BY THE CORPS OF ENGINEERS.
SOUNDINGS WERE TAKEN BY FATHOMETER AND ARE SHOWN TO THE NEAREST TENTHS OF A FOOT.
SOUNDINGS ARE BASED ON THE DATUM OF MEAN LOWER LOW WATER AT THE LOCALITY.
PLANE GRID AND COORDINATES ARE BASED ON THE STATE OF CALIFORNIA COORDINATE SYSTEM, LAMBERT CONFORMAL PROJECTION, ZONE 11 NAD 83, CALIFORNIA, AS DESCRIBED IN SPECIAL PUBLICATION NO. 235, PUBLISHED BY THE NATIONAL OCEAN SURVEY.
PROJECT DEPTHS ARE AS FOLLOWS:
BAR & ENTRANCE CHANNEL = 48 FEET
NORTH BAY, SAMOATO MILE 5.0 & = 38 FEET
EUREKA CHANNEL, FIELDS LANDING CHANNEL & MILE 5.0 TO 'N' STREET = 26 FEET

1:00 INDICATES THE NUMBER AND BEGINNING OF A LINE OF SOUNDINGS.
SOUNDINGS ARE BASED ON TIDE GAUGES REFERENCED TO U.S.C. & G.S.
Vertical and Horizontal Control:
NOAA Station: 941 8767 - North Spit, CA
Benchmark:
NO 11 1340 (PID: LV0359)
MLW Elev: 4.251m
Title:
RTK GPS, using GEOID12a and VDATUM
RTK elevations calibrated at 10.0ft nail at Coast Guard Station Humboldt Bay
Position:
RTK Positions



Federal Navigation Channel	Beacon, General	Contours
Shoaling Area	Obstruction Point	-48
Placement Area	Navigation Buoy	-47
Anchorage Area	Navigation Buoy	-46
Wreck Area	Shoalest Sounding*	-45
Submerged Wreck		-44
Zone_I_Angle_Points		

NOTES:
 DRAWINGS NOT TO BE USED AS NAVIGATION. ONLY CHANNEL CONDITION AT DATE OF SURVEY. THE LOCATION OF ALL NAVIGATION AIDS ARE BASED ON INFORMATION PROVIDED BY THE U.S. COAST GUARD. BUOY LOCATION REPRESENT THE POSITION OF THE SINKER ONLY.
 SURVEYED BY THE CORPS OF ENGINEERS.
 SOUNDINGS WERE TAKEN BY FATHOMETER AND ARE SHOWN TO THE NEAREST TENTHS OF A FOOT.
 SOUNDINGS ARE BASED ON THE DATUM OF MEAN LOWER LOW WATER AT THE LOCALITY.
 PLANE GRID AND COORDINATES ARE BASED ON THE STATE OF CALIFORNIA COORDINATE SYSTEM, LAMBERT CONFORMAL PROJECTION, ZONE 17NAD 83, CALIFORNIA, AS DESCRIBED IN SPECIAL PUBLICATION NO. 235, PUBLISHED BY THE NATIONAL OCEAN SURVEY.
 PROJECT DEPTHS ARE AS FOLLOWS:
 BAR & ENTRANCE CHANNEL = 48 FEET
 NORTH BAY, SAMOATO MILE 5.0 & = 38 FEET
 EUREKA CHANNEL, FIELDS LANDING CHANNEL & MILE 5.0 TO "N" STREET = 26 FEET

1:00 INDICATES THE NUMBER AND BEGINNING OF A LINE OF SOUNDINGS.
 SOUNDINGS ARE BASED ON TIDE GAUGES REFERENCED TO U.S.C. & G.S.
 Vertical and Horizontal Control:
 NOAA Station: 941 8767 - North Spit, CA
 Benchmark:
 NO 11 1340 (PID: LV0359)
 MLLW Elev: 4.251m
 Titles:
 RTK GPS, using GEOID12a and VDATUM
 RTK elevations calibrated at 10.0ft nail at Coast Guard Station Humboldt Bay
 Position:
 RTK Positions

US Army Corps of Engineers
 San Francisco District
 450 Golden Gate Ave
 San Francisco, CA 94102

DISCLAIMER
 The United States Government furnishes this information as a public service. It is not intended to be used for any purpose other than that for which it was prepared. The user is responsible for the results of any application of the data for other than the intended purpose. The United States Government makes no warranty, expressed or implied, concerning the accuracy, completeness, or reliability of the information furnished hereunder. The user is responsible for the results of any application of the data for other than the intended purpose. These data belong to the Government. Therefore the user is not to disseminate or otherwise use these data for other than the intended purpose. The recipient may not transfer these data to others without also transferring this Disclaimer.

Prepared Under the Direction of KEVIN P. ARNETT LT Colonel, C.E., District Engineer	Chart Date: Mar 29, 2022	PDT
Submitted: Hydro Survey Team Leader	Designed by: PDT	Drawn by: PDT
Recommended: Chief, Hydro Survey Section	Checked by: PDT	
Approved: Chief, Construction Branch		

CALIFORNIA
 HUMBOLDT COUNTY
**HUMBOLDT BAY
 BAR & ENTRANCE CHANNEL
 CONDITION SURVEY**
 23 MARCH 2022

**Sheet
 Number
 2 of 2**